



Improved OR Utilization

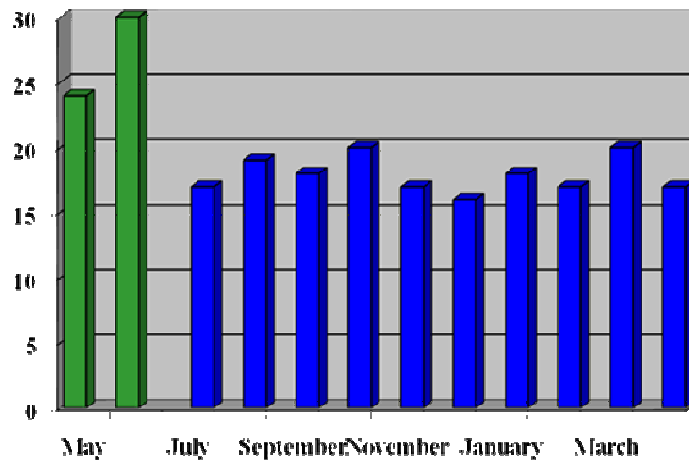
OR utilization is the key to making room for growth through increasing case volumes. Through our pay for performance model, ApolloMD physicians' incomes increase directly as the case volumes increase. ApolloMD dedicates a leader to join with the OR manager on a daily basis to maximize the schedule to improve utilization on an hourly basis. Each individual in our group is motivated to be true partners with the hospital in the processes to improve productivity. We adjust our staffing dynamically throughout the day to allow changes that improve OR utilization. The end effect of having appropriate staffing, more productive providers and minimizing the staffing costs of after-hours cases has resulted in improved finances with the hospital.

5665 New Northside Dr.
Suite 320
Atlanta, Georgia 30328

P: 770.874.5424
E: Bryan@apollomd.com

www.apollomd.com

Piedmont Newnan Hospital
After-hours Utilization
May 2007– April 2008



Challenge:
7 suites, add-on cases spread through the after-hours into the evening

ApolloMD Solution:
6 rooms each day and leave the seventh room for add-ons and urgent cases

Results:
After-hours utilization decreased by more than 43%

